

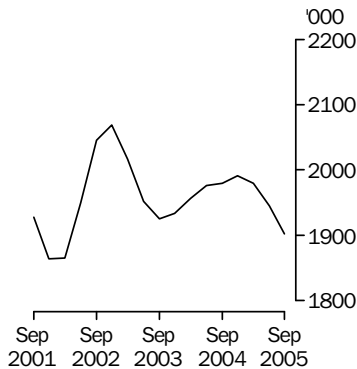
LIVESTOCK PRODUCTS

AUSTRALIA

EMBARGO: 11.30AM (CANBERRA TIME) MON 14 NOV 2005

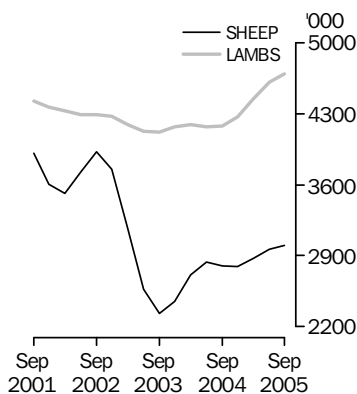
Cattle slaughtering

Excluding calves
Trend



Sheep and lamb slaughtering

Trend



KEY FIGURES

TREND ESTIMATES

	Sep Qtr 2004 '000	Jun Qtr 2005 '000	Sep Qtr 2005 '000
Number slaughtered			
Cattle	1 980.1	1 944.7	1 902.5
Calves	223.8	205.7	201.2
Sheep	2 795.2	2 964.6	3 003.7
Lambs	4 176.1	4 608.2	4 694.2
Pigs	1 347.0	1 329.8	1 328.7
Chickens	108 439.2	108 678.3	109 113.6

	Sep Qtr 2004 tonnes	Jun Qtr 2005 tonnes	Sep Qtr 2005 tonnes
Meat produced			
Beef	526 153	522 532	513 835
Veal	7 667	6 844	6 791
Mutton	58 044	61 357	61 734
Lamb	84 648	95 370	97 509
Pig meat	98 041	96 876	97 045
Chicken meat	181 214	191 490	193 170
Wool receivals	117 781	123 279	123 257

	Jun Qtr 2004 ML	Mar Qtr 2005 ML	Jun Qtr 2005 ML
Whole milk intake by factories	2 518	2 565	2 631

KEY POINTS

TREND ESTIMATES

- In September quarter 2005, the trend estimate for the number of cattle slaughtered fell by 2% to 1.9 million, the lowest quarterly trend estimate since March quarter 2002.
- The trend estimate for the number of calves slaughtered in September quarter 2005 fell by 2% to 201,000. This was the lowest quarterly trend estimate since records commenced in September quarter 1979.
- The trend estimate for the number of lambs slaughtered in September quarter 2005 rose by 2% to 4.7 million, the highest quarterly trend estimate since September quarter 2000.
- The trend estimate for chicken meat produced rose slightly to 193,000 tonnes in September quarter 2005. This was the highest quarterly production recorded since records commenced in March quarter 1970.

INQUIRIES

For further information about these and related statistics, contact the National Information and Referral Service on 1300 135 070 or Frank Costin on Hobart (03) 6222 5838.

NOTES

FORTHCOMING ISSUES

<i>ISSUE (Quarter)</i>	<i>RELEASE DATE</i>
December 2005	14 February 2006
March 2006	16 May 2006

.....

CHANGES IN THIS ISSUE

An error has been detected in the March quarter 2005 and June quarter 2005 issues of this product which led to an understatement of the live cattle export figures in Table 21. The figures understated were those for September quarter 2004. These errors have been corrected in this issue. Figures for other quarters and for other tables were not affected.

FORTHCOMING CHANGES

There are no forthcoming changes.

.....

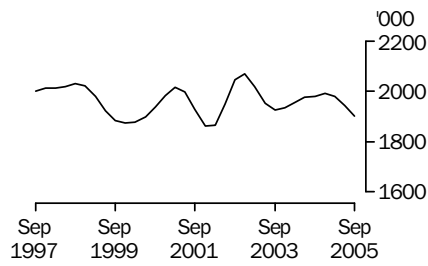
ABBREVIATIONS

ABS Australian Bureau of Statistics
ML megalitre
t tonne
UHT ultra heat treated

Dennis Trewin
Australian Statistician

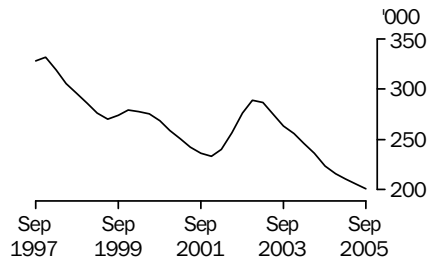
LIVESTOCK SLAUGHTERED TREND

CATTLE (EXCLUDING CALVES)



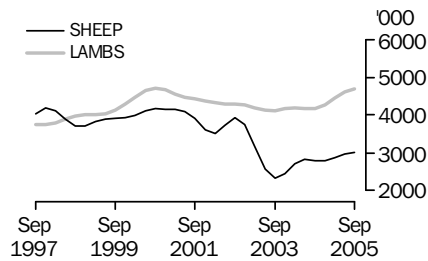
The trend estimate for the number of cattle slaughtered in September quarter 2005 fell by 2% to 1.9 million.

CALVES



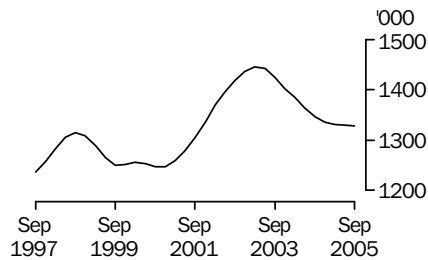
The trend estimate for the number of calves slaughtered in September quarter 2005 fell by 2% to 201,000.

SHEEP AND LAMBS



In September quarter 2005, the trend estimate for the number of sheep slaughtered increased slightly to 3.0 million. The number of lambs slaughtered increased by 2% to 4.7 million.

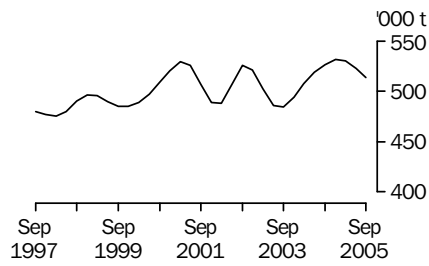
PIGS



In September quarter 2005, the trend estimate for the number of pigs slaughtered remained steady at 1.3 million.

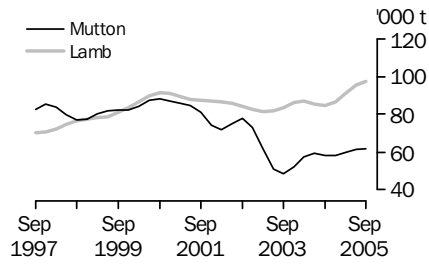
MEAT PRODUCTION TREND

BEEF



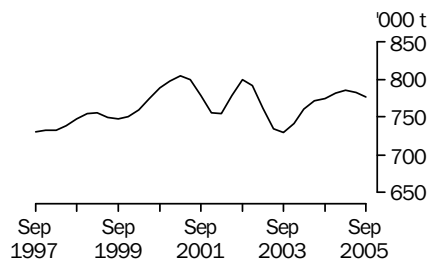
In September quarter 2005, the trend estimate for beef production fell by 2% to 514,000 tonnes.

MUTTON AND LAMB



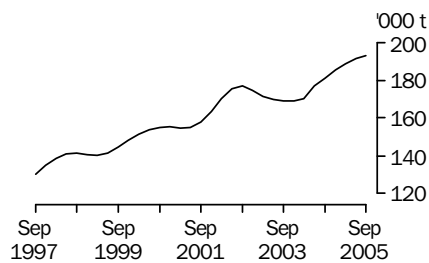
In September quarter 2005, the trend estimate for mutton production increased slightly to 61,700 tonnes. The trend estimate for lamb production increased by 2% to 97,500 tonnes.

TOTAL RED MEAT



The trend estimate for red meat production fell slightly to 777,000 tonnes in September quarter 2005. A decrease in beef production was partly offset by an increase in lamb production.

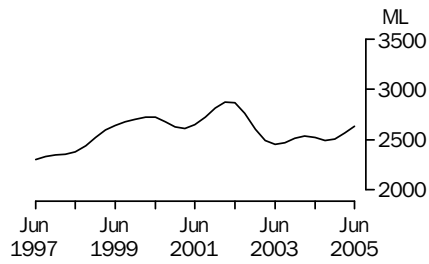
CHICKEN MEAT



The trend estimate for chicken meat production in September quarter 2005 rose slightly to 193,000 tonnes.

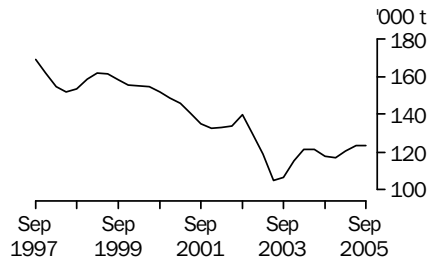
LIVESTOCK PRODUCTS TREND

WHOLE MILK INTAKE BY FACTORIES



The trend estimate for whole milk intake by factories in June quarter 2005 increased by 3% to 2.6 billion litres.

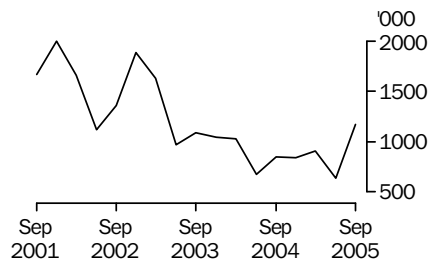
BROKERS AND DEALERS RECEIVALS OF TAXABLE WOOL



The trend estimate for wool receivals by brokers and dealers in September quarter 2005 remained steady at 123,000 tonnes.

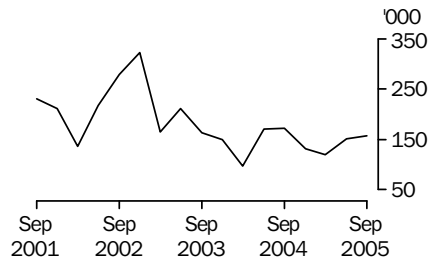
LIVESTOCK EXPORTS ORIGINAL

EXPORTS OF LIVE SHEEP



Live sheep exports rose by 84% to 1.2 million in September quarter 2005. This, combined with a 14% increase in unit value (to \$70.20), saw the gross value of live sheep exports increase by 110% to \$82.4 million.

EXPORTS OF LIVE CATTLE



In September quarter 2005, live cattle exports rose by 4% to 157,000. A 2% increase in unit value (to \$610.47) saw the gross value of live cattle exports rise by 7% to \$95.9 million.

LIST OF TABLES

page

OVERVIEW

1	Livestock slaughtered, Australia	9
2	Livestock products, Australia	10

LIVESTOCK SLAUGHTERINGS

3	Number of livestock slaughtered, bulls, bullocks and steers, by state	11
4	Number of livestock slaughtered, cows and heifers, by state	12
5	Number of livestock slaughtered, total cattle (excluding calves), by state	13
6	Number of livestock slaughtered, calves, by state	14
7	Number of livestock slaughtered, sheep, by state	15
8	Number of livestock slaughtered, lambs, by state	16
9	Number of livestock slaughtered, pigs, by state	17
10	Number of chickens slaughtered, by state	18
11	Number of livestock slaughtered, financial year, by state	19

MEAT PRODUCED

12	Red meat produced, beef, by state	20
13	Red meat produced, veal, by state	21
14	Red meat produced, mutton, by state	22
15	Red meat produced, lamb, by state	23
16	Red meat produced, pig meat, by state	24
17	Total red meat produced, by state	25
18	Chicken meat produced, by state	26
19	Meat produced, financial year, by state	27

EXPORTS OF MEAT AND LIVE ANIMALS

20	Exports of fresh, frozen and processed meat, Australia	28
21	Exports of live sheep and cattle, Australia	29

LIVESTOCK PRODUCTS

22	Whole milk intake by factories, by state	30
23	Market milk sales by factories, by state	31
24	Brokers and dealers receivals of taxable wool, by state	32
25	Livestock products, financial year, by state	33

LIVESTOCK SLAUGHTERED, Australia(a): All Series

<i>Quarter</i>	<i>Bulls, bullocks and steers</i>	<i>Cows and heifers</i>	<i>Cattle (excluding calves)</i>	<i>Calves</i>	<i>Sheep</i>	<i>Lambs</i>	<i>Pigs</i>	<i>Chickens</i>
	'000	'000	'000	'000	'000	'000	'000	'000
ORIGINAL								
2004								
June	1 016.3	1 004.5	2 020.8	218.1	2 708.4	4 236.9	1 424.1	104 147.4
September	1 135.9	953.4	2 089.3	413.9	2 345.3	3 597.7	1 360.1	106 408.0
December	1 105.2	829.4	1 934.6	151.8	3 014.7	4 554.6	1 303.7	118 723.1
2005								
March	1 007.6	807.5	1 815.2	98.1	3 139.4	4 362.4	1 297.5	104 658.7
June	1 138.1	1 008.4	2 146.5	204.1	2 943.2	4 815.8	1 377.8	107 851.1
September	1 102.8	772.0	1 874.7	376.0	2 403.0	4 333.0	1 335.9	108 849.6
SEASONALLY ADJUSTED								
2004								
June	1 012.7	919.0	1 931.7	230.4	2 929.8	4 182.9	1 367.9	105 661.3
September	1 111.6	930.1	2 041.7	218.7	2 766.2	3 895.0	1 342.2	107 959.6
December	1 068.0	882.7	1 950.7	230.0	2 726.2	4 330.4	1 332.4	115 235.0
2005								
March	1 094.5	873.9	1 968.4	195.4	2 797.5	4 358.3	1 338.1	105 220.4
June	1 110.4	904.8	2 015.2	215.2	3 178.2	4 701.3	1 323.2	109 492.6
September	1 080.7	753.1	1 833.9	199.5	2 850.9	4 700.7	1 332.1	110 127.5
TREND								
2004								
June	1 043.2	932.8	1 976.0	236.0	2 838.3	4 174.5	1 364.5	106 817.6
September	1 070.4	909.7	1 980.1	223.8	2 795.2	4 176.1	1 347.0	108 439.2
December	1 090.4	901.0	1 991.4	216.2	2 789.2	4 267.8	1 335.3	108 936.7
2005								
March	1 095.5	883.9	1 979.4	210.9	2 872.3	4 444.7	1 331.4	108 708.1
June	1 094.6	850.1	1 944.7	205.7	2 964.6	4 608.2	1 329.8	108 678.3
September	1 095.5	807.0	1 902.5	201.2	3 003.7	4 694.2	1 328.7	109 113.6

(a) For more information refer to paragraphs 5, and 7 to 9 of the Explanatory Notes.

LIVESTOCK PRODUCTS, Australia(a): All Series

Quarter	RED MEAT						Chicken meat tonnes	Whole milk intake by factories ML	Brokers and dealers receivals of taxable wool tonnes
	Beef tonnes	Veal tonnes	Mutton tonnes	Lamb tonnes	Pig meat tonnes	Total red meat tonnes			
ORIGINAL									
2004									
June	527 514	7 821	54 684	88 430	104 697	783 145	175 791	1 832	92 900
September	551 747	11 246	48 240	70 757	99 416	781 405	179 282	2 369	127 458
December	518 616	5 851	65 349	91 169	94 180	775 163	195 330	3 380	136 722
2005									
March	490 359	4 798	64 894	91 516	92 929	744 496	178 055	2 466	113 652
June	572 088	7 253	58 873	100 849	101 546	840 608	197 362	1 909	97 349
September	504 729	10 024	49 322	88 187	98 609	750 870	188 782	nya	129 296
SEASONALLY ADJUSTED									
2004									
June	506 114	7 952	61 078	86 504	99 299	760 947	177 645	2 539	125 685
September	544 177	7 574	56 876	78 012	97 335	783 974	181 009	2 492	114 315
December	518 280	7 728	57 121	87 359	97 772	768 260	189 267	2 464	115 651
2005									
March	533 095	6 301	58 292	90 620	96 753	785 061	180 943	2 581	118 436
June	535 185	7 222	65 675	96 899	96 272	801 253	199 589	2 659	131 007
September	498 122	6 786	58 520	97 477	97 750	758 655	189 503	nya	117 328
TREND									
2004									
June	519 273	8 135	59 313	85 490	98 950	771 161	177 195	2 518	121 566
September	526 153	7 667	58 044	84 648	98 041	774 553	181 214	2 492	117 781
December	532 033	7 251	57 984	86 680	97 192	781 140	185 363	2 510	117 068
2005									
March	530 436	6 987	59 725	91 200	96 875	785 223	188 658	2 565	120 400
June	522 532	6 844	61 357	95 370	96 876	782 979	191 490	2 631	123 279
September	513 835	6 791	61 734	97 509	97 045	776 914	193 170	nya	123 257

nya not yet available

(a) For more information refer to paragraphs 5 to 9 and 13 to 15 of the Explanatory Notes.

NUMBER OF LIVESTOCK SLAUGHTERED (a), Bulls, bullocks and steers: All Series

Quarter	New South Wales	Victoria	Queensland	South Australia	Western Australia	Tasmania	Australia
	'000	'000	'000	'000	'000	'000	'000
ORIGINAL							
2004							
June	203.0	160.8	535.1	41.6	46.0	29.5	1 016.3
September	235.4	137.2	653.8	34.9	50.3	24.0	1 135.9
December	214.9	159.3	584.0	56.3	61.8	28.5	1 105.2
2005							
March	226.9	160.5	484.7	51.7	52.5	31.0	1 007.6
June	248.6	143.2	608.1	48.1	64.1	25.7	1 138.1
September	224.4	124.1	657.2	34.7	42.3	19.7	1 102.8
SEASONALLY ADJUSTED							
2004							
June	205.4	163.8	527.1	42.5	51.8	28.8	1 012.7
September	239.4	156.6	577.9	43.5	55.2	28.3	1 111.6
December	214.6	150.6	572.3	50.5	50.5	29.5	1 068.0
2005							
March	229.9	148.3	581.9	46.9	53.6	26.9	1 094.5
June	241.4	145.5	598.9	48.9	72.4	24.9	1 110.4
September	229.1	141.8	581.7	43.7	46.3	23.2	1 080.7
TREND							
2004							
June	208.2	159.6	544.5	43.8	53.0	28.0	1 043.2
September	213.3	157.5	561.0	44.8	51.7	28.9	1 070.4
December	221.3	152.3	577.6	47.6	54.3	28.6	1 090.4
2005							
March	228.8	147.9	585.7	48.4	57.8	27.0	1 095.5
June	233.9	145.0	588.3	47.2	58.9	25.1	1 094.6
September	236.6	142.7	590.0	45.4	57.2	23.4	1 095.5

(a) For more information refer to paragraphs 4, 5 and 7 of the Explanatory Notes.

NUMBER OF LIVESTOCK SLAUGHTERED (a), Cows and heifers: All Series

Quarter	New South Wales	Victoria	Queensland	South Australia	Western Australia	Tasmania	Australia
	'000	'000	'000	'000	'000	'000	'000
ORIGINAL							
2004							
June	194.3	245.9	423.9	43.6	67.5	28.4	1 004.5
September	206.5	238.0	377.2	37.0	71.6	22.1	953.4
December	195.8	222.2	281.1	42.6	64.9	21.8	829.4
2005							
March	169.9	210.1	285.9	43.6	73.6	23.5	807.5
June	202.5	245.2	415.7	44.8	71.7	27.5	1 008.4
September	136.9	188.4	332.6	25.6	63.8	23.7	772.0
SEASONALLY ADJUSTED							
2004							
June	186.0	241.0	355.2	40.5	71.4	25.2	919.0
September	211.5	242.4	343.8	42.5	72.9	26.2	930.1
December	194.6	220.2	321.8	42.1	64.6	23.7	882.7
2005							
March	180.3	213.0	342.6	42.0	68.9	22.9	873.9
June	188.2	239.6	347.8	41.4	75.9	22.6	904.8
September	139.6	191.9	303.3	29.7	64.8	27.6	753.1
TREND							
2004							
June	193.2	243.7	357.4	42.1	70.2	25.4	932.8
September	192.5	234.8	340.1	42.0	69.9	25.2	909.7
December	194.3	227.1	335.5	42.7	69.2	23.9	901.0
2005							
March	186.7	222.4	336.7	41.6	69.6	23.3	883.9
June	172.0	216.9	332.2	38.2	70.1	24.0	850.1
September	155.0	209.8	322.3	34.2	69.8	25.7	807.0

(a) For more information refer to paragraphs 4, 5 and 7 of the Explanatory Notes.

NUMBER OF LIVESTOCK SLAUGHTERED (a), Total cattle (excluding calves): All Series

Quarter	New South Wales	Victoria	Queensland	South Australia	Western Australia	Tasmania	Australia
	'000	'000	'000	'000	'000	'000	'000
ORIGINAL							
2004							
June	397.3	406.7	959.0	85.2	113.4	57.9	2 020.8
September	441.8	375.1	1 030.9	72.0	122.0	46.1	2 089.3
December	410.7	381.6	865.1	98.9	126.6	50.3	1 934.6
2005							
March	396.8	370.6	770.6	95.3	126.1	54.5	1 815.2
June	451.1	388.4	1 023.8	92.9	135.8	53.1	2 146.5
September	361.3	312.5	989.8	60.3	106.1	43.4	1 874.7
SEASONALLY ADJUSTED							
2004							
June	391.4	404.8	882.3	83.0	123.2	54.0	1 931.7
September	450.8	399.0	921.7	86.0	128.0	54.5	2 041.7
December	409.2	370.8	894.0	92.6	115.1	53.2	1 950.7
2005							
March	410.2	361.3	924.5	88.9	122.5	49.8	1 968.4
June	429.6	385.1	946.6	90.3	148.4	47.6	2 015.2
September	368.7	333.7	884.9	73.3	111.2	50.9	1 833.9
TREND							
2004							
June	401.4	403.2	902.0	85.9	123.2	53.4	1 976.0
September	405.7	392.3	901.1	86.8	121.6	54.1	1 980.1
December	415.6	379.4	913.1	90.3	123.5	52.5	1 991.4
2005							
March	415.6	370.4	922.4	90.0	127.4	50.3	1 979.4
June	405.9	361.9	920.5	85.4	129.1	49.2	1 944.7
September	391.5	352.6	912.3	79.6	127.0	49.2	1 902.5

(a) For more information refer to paragraphs 4, 5 and 7 of the Explanatory Notes.

NUMBER OF LIVESTOCK SLAUGHTERED (a), Calves: All Series

Quarter	New South Wales	Victoria	Queensland	South Australia	Western Australia	Tasmania	Australia
	'000	'000	'000	'000	'000	'000	'000
ORIGINAL							
2004							
June	55.2	135.5	20.6	2.0	1.1	3.6	218.1
September	50.8	307.9	20.1	1.5	1.2	32.2	413.9
December	45.7	80.7	15.0	1.0	1.1	8.0	151.8
2005							
March	49.1	28.7	17.2	1.2	0.9	0.9	98.1
June	55.6	121.6	21.1	1.6	1.1	3.0	204.1
September	50.5	277.2	16.5	1.3	1.1	29.2	376.0
SEASONALLY ADJUSTED							
2004							
June	50.8	146.0	19.0	1.7	1.2	13.4	230.4
September	51.5	136.3	19.7	1.4	1.1	10.8	218.7
December	50.2	135.1	16.6	1.3	1.1	11.6	230.0
2005							
March	48.3	132.6	17.4	1.3	1.1	11.6	195.4
June	51.2	130.8	19.4	1.3	1.1	11.0	215.2
September	51.2	123.2	16.2	1.2	1.0	9.9	199.5
TREND							
2004							
June	52.6	144.8	19.4	1.6	1.2	12.7	236.0
September	50.5	138.6	18.2	1.5	1.1	11.9	223.8
December	49.7	134.8	17.9	1.3	1.1	11.5	216.2
2005							
March	49.8	132.3	17.7	1.3	1.1	11.3	210.9
June	50.2	129.2	17.7	1.3	1.0	10.9	205.7
September	51.1	125.6	17.6	1.2	1.0	10.3	201.2

(a) For more information refer to paragraphs 4, 5 and 7 of the Explanatory Notes.

NUMBER OF LIVESTOCK SLAUGHTERED (a), Sheep: All Series

Quarter	New South Wales	Victoria	Queensland	South Australia	Western Australia	Tasmania	Australia
	'000	'000	'000	'000	'000	'000	'000
ORIGINAL							
2004							
June	954.8	813.8	212.8	208.5	452.4	66.1	2 708.4
September	715.1	672.7	220.1	213.1	479.1	45.2	2 345.3
December	934.0	886.6	226.6	264.7	606.0	96.7	3 014.7
2005							
March	933.6	945.3	227.2	284.7	651.6	97.1	3 139.4
June	965.7	960.9	245.0	216.6	468.5	86.5	2 943.2
September	697.6	791.2	208.0	218.2	442.1	45.8	2 403.0
SEASONALLY ADJUSTED							
2004							
June	978.7	884.8	210.3	253.8	580.5	65.6	2 929.8
September	789.6	824.7	223.2	241.2	562.7	72.2	2 766.2
December	870.5	792.8	227.5	229.2	526.3	91.7	2 726.2
2005							
March	894.4	825.0	225.3	249.8	534.8	78.7	2 797.5
June	984.0	1 043.2	243.0	264.0	598.3	80.8	3 178.2
September	777.4	972.2	210.9	246.3	525.4	73.2	2 850.9
TREND							
2004							
June	905.8	844.3	220.0	245.3	558.2	72.1	2 838.3
September	873.3	824.7	218.8	239.8	556.6	75.0	2 795.2
December	870.0	820.7	226.6	241.0	548.6	81.6	2 789.2
2005							
March	898.6	874.7	230.8	246.8	549.1	83.0	2 872.3
June	901.3	953.5	228.7	253.7	556.1	79.2	2 964.6
September	859.6	1 017.8	223.1	256.6	556.8	74.4	3 003.7

(a) For more information refer to paragraphs 4, 5 and 7 of the Explanatory Notes.

NUMBER OF LIVESTOCK SLAUGHTERED (a), Lambs: All Series

Quarter	New South Wales	Victoria	Queensland	South Australia	Western Australia	Tasmania	Australia
	'000	'000	'000	'000	'000	'000	'000
ORIGINAL							
2004							
June	989.5	1 621.6	72.1	776.6	663.0	114.1	4 236.9
September	892.5	1 393.7	74.7	559.7	577.7	99.5	3 597.7
December	1 049.2	1 839.6	72.1	853.9	639.4	100.4	4 554.6
2005							
March	1 057.0	1 692.8	62.4	870.8	575.6	103.7	4 362.4
June	1 111.8	1 861.0	78.0	951.8	674.0	139.3	4 815.8
September	966.9	1 755.0	70.2	694.2	705.4	141.3	4 333.0
SEASONALLY ADJUSTED							
2004							
June	999.6	1 654.5	67.4	717.9	656.5	107.5	4 182.9
September	905.0	1 447.6	67.8	714.3	623.0	96.9	3 895.0
December	1 048.0	1 712.9	77.5	803.7	588.6	106.4	4 330.4
2005							
March	1 051.9	1 759.0	69.7	811.0	590.0	110.1	4 358.3
June	1 103.4	1 854.9	72.6	880.8	667.4	127.6	4 701.3
September	981.6	1 830.0	64.0	888.5	758.3	137.8	4 700.7
TREND							
2004							
June	1 028.7	1 655.6	66.1	727.4	635.7	104.1	4 174.5
September	1 023.0	1 671.4	68.3	738.5	620.3	102.2	4 176.1
December	1 046.8	1 713.5	70.2	776.8	596.3	104.1	4 267.8
2005							
March	1 063.8	1 771.7	70.5	827.0	613.7	113.7	4 444.7
June	1 053.8	1 820.2	69.4	865.7	667.8	125.5	4 608.2
September	1 031.3	1 846.6	67.2	889.8	724.5	134.6	4 694.2

(a) For more information refer to paragraphs 4, 5 and 7 of the Explanatory Notes.

NUMBER OF LIVESTOCK SLAUGHTERED (a), Pigs: All Series

Quarter	New South Wales	Victoria	Queensland	South Australia	Western Australia	Tasmania	Australia
	'000	'000	'000	'000	'000	'000	'000
ORIGINAL							
2004							
June	443.1	247.7	335.4	211.5	173.8	10.2	1 424.1
September	415.9	235.2	323.1	201.3	170.6	11.6	1 360.1
December	392.5	210.3	314.6	218.5	152.6	13.3	1 303.7
2005							
March	382.7	198.6	318.1	229.8	156.8	9.9	1 297.5
June	423.5	203.3	329.5	245.2	163.7	10.8	1 377.8
September	424.6	181.8	314.1	250.5	152.8	10.4	1 335.9
SEASONALLY ADJUSTED							
2004							
June	423.7	238.6	321.6	198.3	166.2	10.5	1 367.9
September	413.1	231.5	320.4	202.4	168.1	11.3	1 342.2
December	399.3	211.4	322.5	235.9	160.4	12.0	1 332.4
2005							
March	400.4	206.1	325.7	232.1	158.4	10.8	1 338.1
June	405.0	195.3	316.3	227.6	156.9	11.2	1 323.2
September	419.6	183.5	315.1	249.2	150.4	10.3	1 332.1
TREND							
2004							
June	422.2	237.6	322.7	199.5	168.1	11.1	1 364.5
September	410.9	228.1	321.5	210.9	165.4	11.3	1 347.0
December	402.5	216.3	322.6	223.6	162.3	11.4	1 335.3
2005							
March	401.6	204.7	321.9	231.8	158.8	11.3	1 331.4
June	407.0	194.5	318.9	236.8	155.2	10.9	1 329.8
September	415.0	185.4	315.3	240.8	152.0	10.5	1 328.7

(a) For more information refer to paragraphs 4, 5 and 7 of the Explanatory Notes.

NUMBER OF CHICKENS SLAUGHTERED(a): All Series

Quarter	New South Wales	Victoria	Queensland	South Australia	Western Australia	Australia
	'000	'000	'000	'000	'000	'000
ORIGINAL						
2004						
June	37 029.2	29 621.5	18 213.7	np	np	104 147.4
September	37 001.4	29 496.7	20 190.6	np	np	106 408.0
December	40 401.4	33 740.6	22 856.1	np	np	118 723.1
2005						
March	34 263.7	30 463.9	20 383.2	np	np	104 658.7
June	36 306.7	31 025.2	20 656.3	np	np	107 851.1
September	37 957.7	29 610.1	21 212.8	np	np	108 849.6
SEASONALLY ADJUSTED						
2004						
June	37 436.4	29 828.0	18 777.9	np	np	105 661.3
September	37 200.6	30 188.8	20 620.9	np	np	107 959.6
December	39 720.1	32 870.0	21 496.3	np	np	115 235.0
2005						
March	34 677.5	30 233.5	20 771.8	np	np	105 220.4
June	36 717.5	31 244.9	21 327.2	np	np	109 492.6
September	37 700.3	30 818.9	21 301.6	np	np	110 127.5
TREND						
2004						
June	37 551.9	30 001.3	19 621.1	np	np	106 817.6
September	37 961.1	29 970.1	20 324.9	np	np	108 439.2
December	37 464.2	30 150.9	20 974.0	np	np	108 936.7
2005						
March	36 800.3	30 472.9	21 213.1	np	np	108 708.1
June	36 566.2	30 800.7	21 201.7	np	np	108 678.3
September	36 722.9	31 071.5	21 242.3	np	np	109 113.6

np not available for publication but included in totals where applicable, unless otherwise indicated

(a) For more information refer to paragraphs 8 and 9 of the Explanatory Notes.

NUMBER OF LIVESTOCK SLAUGHTERED (a): Original

Financial year	New South Wales '000	Victoria '000	Queensland '000	South Australia '000	Western Australia '000	Tasmania '000	Australia '000
BULLS, BULLOCKS AND STEERS							
2002-03	961.6	630.0	1 993.7	166.6	173.4	79.9	4 006.3
2003-04	794.0	613.5	2 049.9	178.6	200.4	98.3	3 935.7
2004-05	925.8	600.2	2 330.6	191.1	228.7	109.2	4 386.9
COWS AND HEIFERS							
2002-03	968.9	1 020.5	1 521.6	192.5	255.9	112.9	4 076.4
2003-04	822.2	943.1	1 514.4	164.4	262.5	106.5	3 817.2
2004-05	774.6	915.5	1 359.8	168.0	281.8	94.9	3 598.7
CATTLE (excluding calves)							
2002-03	1 930.5	1 650.4	3 515.2	359.1	429.3	192.8	8 082.7
2003-04	1 616.1	1 556.6	3 564.2	342.9	462.9	204.7	7 752.9
2004-05	1 700.4	1 515.7	3 690.5	359.1	510.5	204.1	7 985.6
CALVES							
2002-03	246.1	749.3	92.1	11.0	5.3	41.2	1 145.8
2003-04	221.9	659.2	84.7	7.2	4.7	47.3	1 025.8
2004-05	201.2	539.0	73.3	5.3	4.3	44.1	867.9
SHEEP							
2002-03	5 282.2	3 641.2	1 142.0	1 431.8	1 771.8	388.3	13 657.3
2003-04	3 310.0	3 078.9	892.8	947.5	1 845.4	346.3	10 420.7
2004-05	3 548.4	3 465.4	918.9	979.1	2 205.2	325.6	11 442.6
LAMBS							
2002-03	4 388.8	6 904.8	340.3	2 841.1	2 021.0	374.0	16 869.8
2003-04	4 047.4	6 471.4	261.5	2 970.6	2 391.8	419.2	16 561.8
2004-05	4 110.4	6 787.1	287.2	3 236.2	2 466.7	442.9	17 330.6
PIGS							
2002-03	1 860.6	1 033.2	1 234.8	884.1	672.3	47.7	5 741.7
2003-04	1 751.1	973.1	1 318.1	820.9	674.4	44.2	5 591.2
2004-05	1 614.6	847.3	1 285.4	894.8	643.7	45.6	5 339.2
CHICKENS							
2002-03	149 917.0	117 892.0	75 149.3	np	np	np	419 181.0
2003-04	149 358.7	120 345.9	77 472.0	np	np	np	423 742.0
2004-05	147 973.2	124 726.5	84 086.2	np	np	np	437 640.9

np not available for publication but included in totals where applicable, unless otherwise indicated

(a) For more information refer to paragraphs 4, 5 and 7 to 9 of the Explanatory Notes.

RED MEAT PRODUCED(a), Beef: All Series

Quarter	New South Wales	Victoria	Queensland	South Australia	Western Australia	Tasmania	Australia
	tonnes	tonnes	tonnes	tonnes	tonnes	tonnes	tonnes
ORIGINAL							
2004							
June	101 535	95 009	265 058	21 651	28 307	15 667	527 514
September	112 602	87 845	290 620	17 620	30 219	12 550	551 747
December	106 301	93 276	246 510	25 797	32 317	14 138	518 616
2005							
March	105 848	88 486	222 552	25 085	32 581	15 528	490 359
June	115 970	93 618	286 728	24 547	36 289	14 643	572 088
September	92 934	74 588	283 425	15 005	26 452	12 029	504 729
SEASONALLY ADJUSTED							
2004							
June	100 173	96 158	247 723	21 581	31 385	14 666	506 114
September	115 393	94 253	255 340	21 692	32 239	15 639	544 177
December	106 325	90 842	254 887	23 621	28 777	14 429	518 280
2005							
March	108 637	86 270	266 055	22 995	31 371	13 513	533 095
June	110 362	92 169	267 804	24 335	40 294	13 717	535 185
September	95 189	80 113	252 458	18 680	28 180	14 946	498 122
TREND							
2004							
June	101 912	94 946	250 675	21 915	31 254	14 927	519 273
September	104 091	93 911	253 138	22 110	30 528	15 027	526 153
December	107 722	91 386	259 061	23 180	31 341	14 468	532 033
2005							
March	108 304	89 108	263 049	23 411	32 997	13 954	530 436
June	105 511	86 816	262 719	22 418	33 895	13 957	522 532
September	101 174	84 420	259 620	20 840	33 402	14 382	513 835

(a) For more information refer to paragraphs 4 to 7 of the Explanatory Notes.

	<i>New South Wales</i>	<i>Victoria</i>	<i>Queensland</i>	<i>South Australia</i>	<i>Western Australia</i>	<i>Tasmania</i>	<i>Australia</i>
<i>Quarter</i>	tonnes	tonnes	tonnes	tonnes	tonnes	tonnes	tonnes
ORIGINAL							
2004							
June	3 547	3 062	999	62	55	82	7 821
September	3 252	6 293	949	50	63	627	11 246
December	2 968	1 857	736	38	74	164	5 851
2005							
March	3 131	742	797	39	51	25	4 798
June	3 589	2 501	970	49	61	70	7 253
September	3 243	5 276	802	42	79	570	10 024
SEASONALLY ADJUSTED							
2004							
June	3 291	3 221	934	55	61	279	7 952
September	3 353	2 884	936	46	54	217	7 574
December	3 297	2 992	823	46	77	239	7 728
2005							
March	2 975	2 981	780	41	58	201	6 301
June	3 335	2 622	906	43	61	235	7 222
September	3 342	2 435	792	40	68	198	6 786
TREND							
2004							
June	3 385	3 146	958	53	61	245	8 135
September	3 273	3 026	883	49	63	223	7 667
December	3 208	2 966	846	45	64	219	7 251
2005							
March	3 184	2 858	830	43	64	221	6 987
June	3 228	2 684	830	41	64	215	6 844
September	3 318	2 499	834	40	63	208	6 791

(a) For more information refer to paragraphs 4 to 7 of the Explanatory Notes.

RED MEAT PRODUCED(a), Mutton: All Series

Quarter	<i>New South Wales</i>	<i>Victoria</i>	<i>Queensland</i>	<i>South Australia</i>	<i>Western Australia</i>	<i>Tasmania</i>	Australia
	tonnes	tonnes	tonnes	tonnes	tonnes	tonnes	tonnes
ORIGINAL							
2004							
June	20 127	14 923	4 479	4 919	8 932	1 304	54 684
September	15 267	12 855	4 650	4 977	9 617	873	48 240
December	21 718	18 397	4 953	6 292	12 066	1 922	65 349
2005							
March	20 571	18 408	4 607	6 536	12 880	1 893	64 894
June	19 961	18 367	4 689	4 915	9 279	1 662	58 873
September	14 723	15 022	4 310	4 845	9 515	907	49 322
SEASONALLY ADJUSTED							
2004							
June	21 298	17 142	4 439	6 186	11 626	1 305	61 078
September	16 908	15 729	4 777	5 630	11 109	1 406	56 876
December	19 484	15 770	4 807	5 254	10 425	1 798	57 121
2005							
March	19 840	16 056	4 660	5 825	10 652	1 531	58 292
June	21 031	21 073	4 663	6 178	12 025	1 569	65 675
September	16 461	18 485	4 419	5 479	11 106	1 461	58 520
TREND							
2004							
June	19 863	16 370	4 704	5 953	11 150	1 421	59 313
September	19 087	15 932	4 675	5 647	11 039	1 472	58 044
December	19 154	16 083	4 743	5 592	10 839	1 593	57 984
2005							
March	19 732	17 301	4 715	5 719	10 953	1 619	59 725
June	19 487	18 785	4 596	5 843	11 304	1 550	61 357
September	18 196	19 800	4 490	5 834	11 538	1 475	61 734

(a) For more information refer to paragraphs 4 to 7 of the Explanatory Notes.

<i>Quarter</i>	<i>New South Wales</i>	<i>Victoria</i>	<i>Queensland</i>	<i>South Australia</i>	<i>Western Australia</i>	<i>Tasmania</i>	<i>Australia</i>
tonnes	tonnes	tonnes	tonnes	tonnes	tonnes	tonnes	tonnes
ORIGINAL							
2004							
June	20 199	33 055	1 438	18 144	13 246	2 348	88 430
September	17 400	27 334	1 426	11 403	11 183	2 011	70 757
December	20 812	36 524	1 420	18 060	12 380	1 972	91 169
2005							
March	21 422	34 866	1 193	20 252	11 693	2 091	91 516
June	22 916	37 224	1 525	22 441	13 866	2 876	100 849
September	19 616	34 928	1 374	14 877	14 544	2 848	88 187
SEASONALLY ADJUSTED							
2004							
June	20 216	33 445	1 321	16 154	12 944	2 190	86 504
September	17 892	28 665	1 296	15 205	12 147	1 947	78 012
December	20 827	34 328	1 535	17 468	11 476	2 104	87 359
2005							
March	21 157	35 946	1 350	18 501	11 973	2 241	90 620
June	22 552	36 671	1 394	19 985	13 556	2 611	96 899
September	20 226	36 794	1 254	19 937	15 737	2 762	97 477
TREND							
2004							
June	20 751	33 455	1 293	16 278	12 397	2 097	85 490
September	20 363	33 622	1 317	16 106	12 113	2 051	84 648
December	20 826	34 494	1 345	17 018	11 755	2 092	86 680
2005							
March	21 403	35 644	1 357	18 528	12 315	2 297	91 200
June	21 482	36 516	1 343	19 614	13 651	2 546	95 370
September	21 195	36 889	1 308	20 097	14 973	2 725	97 509

(a) For more information refer to paragraphs 4 to 7 of the Explanatory Notes.

RED MEAT PRODUCED(a), Pig meat: All Series

<i>Quarter</i>	<i>New South Wales</i>	<i>Victoria</i>	<i>Queensland</i>	<i>South Australia</i>	<i>Western Australia</i>	<i>Tasmania</i>	<i>Australia</i>
<i>tonnes</i>	<i>tonnes</i>	<i>tonnes</i>	<i>tonnes</i>	<i>tonnes</i>	<i>tonnes</i>	<i>tonnes</i>	<i>tonnes</i>
ORIGINAL							
2004							
June	32 956	18 250	25 868	15 162	11 781	566	104 697
September	30 504	17 557	24 936	14 135	11 533	643	99 416
December	28 477	15 230	23 337	16 112	10 220	719	94 180
2005							
March	28 168	14 688	23 049	15 773	10 614	561	92 929
June	31 935	15 265	25 042	17 504	11 105	615	101 546
September	31 385	13 653	23 392	19 178	10 320	600	98 609
SEASONALLY ADJUSTED							
2004							
June	30 944	17 529	24 559	14 023	11 137	583	99 299
September	30 096	17 158	24 152	14 199	11 295	620	97 335
December	29 467	15 513	23 998	17 571	10 931	657	97 772
2005							
March	29 673	15 351	24 434	15 924	10 750	611	96 753
June	29 997	14 629	23 781	15 937	10 510	634	96 272
September	30 991	13 594	22 829	19 257	10 108	598	97 750
TREND							
2004							
June	30 872	17 462	24 357	13 996	11 290	611	98 950
September	30 073	16 839	24 225	14 509	11 157	622	98 041
December	29 608	16 003	24 233	15 047	10 991	631	97 192
2005							
March	29 704	15 202	24 073	15 850	10 745	632	96 875
June	30 145	14 486	23 698	16 933	10 456	619	96 876
September	30 699	13 837	23 207	18 086	10 203	607	97 045

(a) For more information refer to paragraphs 4 to 7 of the Explanatory Notes.

TOTAL RED MEAT PRODUCED(a): All Series

Quarter	New South Wales	Victoria	Queensland	South Australia	Western Australia	Tasmania	Australia
	tonnes	tonnes	tonnes	tonnes	tonnes	tonnes	tonnes
ORIGINAL							
2004							
June	178 365	164 299	297 841	59 938	62 322	19 968	783 145
September	179 025	151 884	322 582	48 184	62 615	16 704	781 405
December	180 276	165 284	276 956	66 300	67 058	18 916	775 163
2005							
March	179 140	157 189	252 197	67 686	67 819	20 097	744 496
June	194 371	166 975	318 954	69 457	70 600	19 866	840 608
September	161 901	143 467	313 302	53 948	60 909	16 954	750 870
SEASONALLY ADJUSTED							
2004							
June	175 922	167 495	278 976	57 999	67 153	19 023	760 947
September	183 642	158 689	286 501	56 772	66 844	19 829	783 974
December	179 400	159 445	286 050	63 960	61 686	19 227	768 260
2005							
March	182 282	156 604	297 279	63 286	64 804	18 097	785 061
June	187 277	167 164	298 548	66 478	76 446	18 766	801 253
September	166 209	151 421	281 752	63 393	65 199	19 965	758 655
TREND							
2004							
June	176 783	165 379	281 987	58 195	66 152	19 301	771 161
September	176 887	163 330	284 238	58 421	64 900	19 395	774 553
December	180 518	160 932	290 228	60 882	64 990	19 003	781 140
2005							
March	182 327	160 113	294 024	63 551	67 074	18 723	785 223
June	179 853	159 287	293 186	64 849	69 370	18 887	782 979
September	174 582	157 445	289 459	64 897	70 179	19 397	776 914

(a) For more information refer to paragraphs 4 to 7 of the Explanatory Notes.

CHICKEN MEAT PRODUCED(a): All Series

Quarter	New South Wales	Victoria	Queensland	South Australia	Western Australia	Australia
	tonnes	tonnes	tonnes	tonnes	tonnes	tonnes
ORIGINAL						
2004						
June	63 053	49 810	29 587	np	np	175 791
September	64 322	50 354	30 849	np	np	179 282
December	69 342	56 172	34 816	np	np	195 330
2005						
March	59 514	54 924	31 001	np	np	178 055
June	72 537	58 058	32 002	np	np	197 362
September	68 926	50 901	36 896	np	np	188 782
SEASONALLY ADJUSTED						
2004						
June	63 473	50 119	30 359	np	np	177 645
September	64 345	51 878	30 923	np	np	181 009
December	68 101	54 212	32 733	np	np	189 267
2005						
March	61 030	54 797	32 196	np	np	180 943
June	73 045	58 514	32 888	np	np	199 589
September	67 814	53 130	36 458	np	np	189 503
TREND						
2004						
June	62 881	50 392	30 221	np	np	177 195
September	64 329	51 808	31 268	np	np	181 214
December	65 480	54 051	31 897	np	np	185 363
2005						
March	66 551	55 586	32 619	np	np	188 658
June	68 138	55 942	33 780	np	np	191 490
September	69 457	55 368	35 183	np	np	193 170

np not available for publication but included in totals where applicable, unless otherwise indicated

(a) For more information refer to paragraphs 8 and 9 of the Explanatory Notes.

MEAT PRODUCED(a): Original

<i>Financial year</i>	<i>New South Wales</i> tonnes	<i>Victoria</i> tonnes	<i>Queensland</i> tonnes	<i>South Australia</i> tonnes	<i>Western Australia</i> tonnes	<i>Tasmania</i> tonnes	<i>Australia</i> tonnes
BEEF							
2002-03	471 498	370 223	946 950	88 362	105 074	51 376	2 034 613
2003-04	401 926	361 323	974 715	86 755	116 555	55 454	1 997 848
2004-05	440 720	363 226	1 046 410	93 049	131 407	56 859	2 132 810
VEAL							
2002-03	16 493	16 007	4 202	341	300	826	38 220
2003-04	14 277	15 076	4 253	234	258	947	35 093
2004-05	12 941	11 393	3 451	176	250	886	29 147
MUTTON							
2002-03	106 106	67 552	20 741	30 893	35 431	7 495	268 218
2003-04	73 335	60 055	19 021	23 369	37 094	6 839	219 713
2004-05	77 517	68 026	18 899	22 721	43 842	6 351	237 356
LAMB							
2002-03	85 304	130 699	6 284	60 114	39 568	7 439	329 407
2003-04	82 149	130 772	5 127	67 753	47 212	8 436	341 448
2004-05	82 550	135 948	5 564	72 157	49 122	8 950	354 290
PIG MEAT							
2002-03	140 247	72 105	94 434	64 147	45 490	2 715	419 555
2003-04	129 800	70 289	99 774	57 960	45 190	2 457	405 898
2004-05	119 085	62 740	96 365	63 525	43 471	2 538	388 070
TOTAL RED MEAT							
2002-03	819 648	656 586	1 072 611	243 857	225 863	69 851	3 090 013
2003-04	701 486	637 515	1 102 890	236 071	246 309	74 134	3 000 002
2004-05	732 812	641 332	1 170 689	251 627	268 092	75 584	3 141 673
CHICKEN MEAT							
2002-03	256 445	204 440	114 327	np	np	np	689 826
2003-04	247 755	205 348	117 889	np	np	np	693 602
2004-05	265 716	219 508	128 669	np	np	np	750 029

np not available for publication but included in totals where applicable, unless otherwise indicated

(a) For more information refer to paragraphs 4 to 9 in the Explanatory Notes.

Period	FRESH, CHILLED OR FROZEN MEAT									PROCESSED MEAT	
	<i>Beef bone-in</i>	<i>Beef bone-out</i>	<i>Veal bone-in</i>	<i>Veal bone-out</i>	<i>Mutton bone-in</i>	<i>Mutton bone-out</i>	<i>Lamb bone-in</i>	<i>Lamb bone-out</i>	<i>Pork</i>	<i>Bacon and ham</i>	<i>Canned meat</i>
	tonnes	tonnes	tonnes	tonnes	tonnes	tonnes	tonnes	tonnes	tonnes	tonnes	tonnes
2002-03	37 467	894 430	3 675	6 458	109 345	52 275	87 907	14 082	62 927	351	17 048
2003-04	32 069	852 412	2 893	6 262	86 539	42 722	100 537	18 326	50 667	558	24 705
2004-05	44 636	959 463	3 320	5 775	101 740	41 790	106 518	21 699	43 495	449	22 835
2004											
June	8 468	240 695	611	1 371	22 790	13 095	26 320	5 712	11 914	114	6 015
September	7 208	245 649	767	2 286	17 892	9 203	18 130	3 866	11 842	114	5 783
December	12 022	252 729	792	1 357	27 898	11 686	29 707	5 072	10 741	136	6 293
2005											
March	12 372	200 576	618	830	29 372	9 645	26 923	5 348	10 036	72	4 985
June	13 035	260 509	1 144	1 302	26 578	11 257	31 758	7 413	10 876	127	5 774
September	14 685	228 008	1 021	2 110	18 861	8 043	27 885	6 354	10 547	105	5 747

(a) For more information refer to paragraphs 10 and 11 of the Explanatory Notes.

<i>Period</i>	<i>Number</i>	<i>Gross weight</i>	<i>Gross value</i>	<i>Unit value</i>
	'000	'000 tonnes	\$'000	\$
.....				
SHEEP				
2002-03	5 843.2	273.0	408 235	69.87
2003-04	3 842.7	188.2	266 457	69.34
2004-05	3 233.2	166.1	206 678	63.92
2004				
June	675.9	32.4	44 830	66.33
September	849.4	48.5	58 088	68.38
December	839.8	42.2	53 946	64.24
2005				
March	904.6	44.3	55 415	61.26
June	639.4	31.1	39 228	61.35
September	1 173.7	60.0	82 397	70.20
.....				
CATTLE				
2002-03	976.6	362.5	569 288	582.95
2003-04	581.5	192.0	317 850	546.65
2004-05	573.7	191.7	374 060	652.01
2004				
June	171.2	58.1	97 673	570.44
September	171.9	57.3	111 885	650.69
December	131.0	45.3	95 115	725.95
2005				
March	120.2	40.6	77 020	640.98
June	150.6	48.5	90 040	597.97
September	157.1	55.3	95 927	610.47

(a) For more information refer to paragraph 12 of the Explanatory Notes.

WHOLE MILK INTAKE, By Factories(a)(b): All Series

	<i>New South Wales</i>	<i>Victoria</i>	<i>Queensland</i>	<i>South Australia</i>	<i>Western Australia</i>	<i>Tasmania</i>	<i>Australia</i>
<i>Quarter</i>	ML	ML	ML	ML	ML	ML	ML
ORIGINAL							
2004							
March	302	1 546	161	172	93	168	2 442
June	274	1 070	147	156	91	95	1 832
September	307	1 535	167	160	102	98	2 369
December	347	2 314	166	204	110	240	3 380
2005							
March	289	1 617	145	165	88	162	2 466
June	274	1 147	142	149	96	101	1 909
SEASONALLY ADJUSTED							
2004							
March	315	1 611	166	178	100	153	2 523
June	307	1 656	158	174	96	148	2 539
September	301	1 617	159	169	97	149	2 492
December	304	1 582	156	170	102	150	2 464
2005							
March	306	1 711	152	168	96	148	2 581
June	307	1 771	153	171	101	156	2 659
TREND							
2004							
March	314	1 627	165	177	100	150	2 533
June	308	1 627	161	174	98	150	2 518
September	303	1 615	157	171	97	149	2 492
December	304	1 635	155	169	98	149	2 510
2005							
March	306	1 687	153	169	99	151	2 565
June	307	1 750	152	170	99	153	2 631

(a) For more information refer to paragraph 13 of the Explanatory Notes.

(b) Data for Australian Capital Territory are included in New South Wales; data for Northern Territory are included in South Australia.

Source: Original series data from Dairy Australia.

MARKET MILK SALES, By Factories(a)(b): All Series

	<i>New South Wales</i>	<i>Victoria</i>	<i>Queensland</i>	<i>South Australia</i>	<i>Western Australia</i>	<i>Tasmania</i>	<i>Australia</i>
<i>Quarter</i>	ML	ML	ML	ML	ML	ML	ML
ORIGINAL							
2004							
March	155	119	103	49	52	13	491
June	158	120	103	49	50	13	493
September	160	122	108	51	54	13	508
December	158	123	107	50	55	14	506
2005							
March	159	118	106	48	52	13	497
June	164	121	109	49	54	13	511
SEASONALLY ADJUSTED							
2004							
March	157	121	103	50	52	13	496
June	157	121	103	49	50	13	493
September	159	120	105	49	53	13	499
December	159	123	107	51	55	13	507
2005							
March	161	122	108	49	54	13	508
June	163	120	109	49	54	13	509
TREND							
2004							
March	157	120	103	49	51	13	494
June	157	120	104	49	52	13	495
September	158	121	105	50	53	13	500
December	159	122	107	50	54	13	504
2005							
March	161	122	108	50	54	13	508
June	162	121	109	49	54	13	510

(a) For more information refer to paragraph 13 of the Explanatory Notes.

(b) Data for Australian Capital Territory are included in New South Wales; data for Northern Territory are included in South Australia.

Source: Original series data from Dairy Australia.

BROKERS AND DEALERS RECEIVALS OF TAXABLE WOOL(a): All Series

Quarter	New South Wales	Victoria	Queensland	South Australia	Western Australia	Tasmania	Australia	% of total received by brokers
	tonnes	tonnes	tonnes	tonnes	tonnes	tonnes	tonnes	%
ORIGINAL								
2004								
June	30 633	24 001	3 652	11 528	19 657	3 429	92 900	78.1
September	42 313	29 087	6 706	19 936	27 521	1 896	127 458	84.1
December	43 432	36 591	4 333	19 815	28 563	3 988	136 722	80.0
2005								
March	32 051	28 550	3 462	14 438	32 900	2 251	113 652	81.2
June	31 395	26 118	5 716	13 303	18 070	2 747	97 349	77.0
September	42 735	29 410	7 545	17 387	28 538	3 682	129 296	79.7
SEASONALLY ADJUSTED								
2004								
June	38 668	33 084	3 378	16 988	29 327	4 240	125 685	..
September	34 686	28 885	4 894	16 899	26 995	1 955	114 315	..
December	38 214	27 334	5 472	15 869	25 931	2 831	115 651	..
2005								
March	37 254	30 766	4 414	16 150	26 932	2 920	118 436	..
June	39 478	35 737	5 390	19 678	27 390	3 332	131 007	..
September	35 463	29 498	5 687	14 812	28 114	3 757	117 328	..
TREND								
2004								
June	37 274	31 287	4 421	17 323	28 035	3 226	121 566	..
September	37 013	29 511	4 609	16 478	27 330	2 839	117 781	..
December	37 193	29 260	4 867	16 481	26 618	2 650	117 068	..
2005								
March	37 860	30 857	5 086	16 997	26 694	2 907	120 400	..
June	37 840	32 306	5 218	17 154	27 389	3 372	123 279	..
September	36 965	32 476	5 485	16 803	27 950	3 578	123 257	..

.. not applicable

(a) For more information refer to paragraphs 4, 14 and 15 of the Explanatory Notes.

<i>Financial year</i>	<i>New South Wales</i>	<i>Victoria</i>	<i>Queensland</i>	<i>South Australia</i>	<i>Western Australia</i>	<i>Tasmania</i>	<i>Australia</i>
.....							
WHOLE MILK INTAKE BY FACTORIES (b) (ML)							
2002-03	1 301	6 585	720	733	404	585	10 328
2003-04	1 271	6 434	674	703	403	590	10 075
2004-05	1 218	6 613	619	679	396	600	10 125
.....							
MARKET MILK SALES BY FACTORIES (b) (ML)							
2002-03	616	473	404	181	200	51	1 925
2003-04	628	484	411	196	204	52	1 976
2004-05	641	485	429	199	215	53	2 022
.....							
BROKERS AND DEALERS RECEIVALS OF TAXABLE WOOL (Tonnes)							
2002-03	168 138	128 444	18 287	65 054	108 739	14 357	503 020
2003-04	140 815	119 667	17 127	66 982	109 853	13 138	467 582
2004-05	149 192	120 346	20 217	67 492	107 054	10 881	475 181

(a) For more information refer to paragraphs 13 to 15 of the Explanatory Notes.

(b) Data for Australian Capital Territory are included in New South Wales; data for Northern Territory are included in South Australia.

Source: Original series milk data from Dairy Australia.

WHAT IF...? REVISIONS TO TREND ESTIMATES

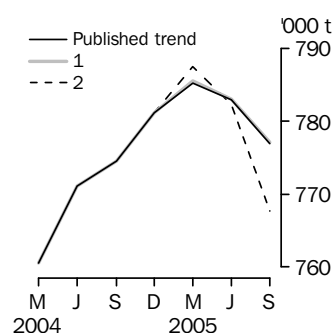
EFFECT OF NEW SEASONALLY ADJUSTED ESTIMATES ON TREND ESTIMATES

TREND REVISIONS

Recent seasonally adjusted and trend estimates are likely to be revised when original estimates for subsequent quarters become available. The approximate effects of possible scenarios on trend estimates are presented below. These illustrate the impact on trend estimates if next quarter's seasonally adjusted estimate either rises or falls by a certain percentage (based on the historical average of movements in seasonally adjusted estimates).

For further information, see paragraphs 20 to 22 of the Explanatory Notes.

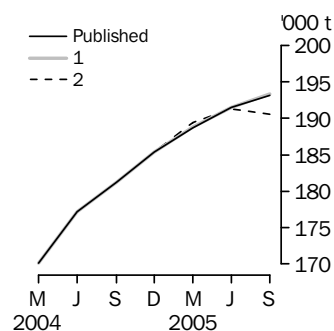
RED MEAT PRODUCTION



WHAT IF NEXT QUARTER'S SEASONALLY ADJUSTED ESTIMATE:

	<u>Trend as published</u>		<u>(1) rises by 2.2% on Sep Qtr 2005</u>		<u>(2) falls by 2.2% on Sep Qtr 2005</u>	
	number	% change	number	% change	number	% change
Sep Qtr 2004	774 553	0.4	774 554	0.4	774 554	0.4
Dec Qtr 2004	781 140	0.9	781 140	0.9	781 140	0.9
Mar Qtr 2005	785 223	0.5	785 496	0.6	787 456	0.8
Jun Qtr 2005	782 979	-0.3	783 002	-0.3	782 289	-0.7
Sep Qtr 2005	776 914	-0.8	777 120	-0.8	767 668	-1.9

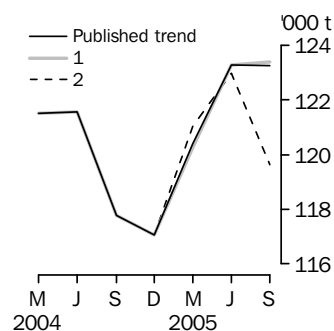
CHICKEN MEAT PRODUCTION



WHAT IF NEXT QUARTER'S SEASONALLY ADJUSTED ESTIMATE:

	<u>Trend as published</u>		<u>(1) rises by 2.6% on Sep Qtr 2005</u>		<u>(2) falls by 2.6% on Sep Qtr 2005</u>	
	number	% change	number	% change	number	% change
Sep Qtr 2004	181 214	2.3	181 212	2.3	181 212	2.3
Dec Qtr 2004	185 363	2.3	185 368	2.3	185 368	2.3
Mar Qtr 2005	188 658	1.8	188 772	1.8	189 351	2.1
Jun Qtr 2005	191 490	1.5	191 453	1.4	191 252	1.0
Sep Qtr 2005	193 170	0.9	193 318	1.0	190 534	-0.4

WOOL RECEIVALS



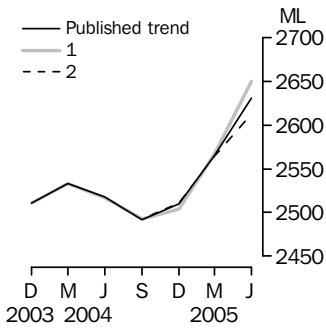
WHAT IF NEXT QUARTER'S SEASONALLY ADJUSTED ESTIMATE:

	<u>Trend as published</u>		<u>(1) rises by 5.6% on Sep Qtr 2005</u>		<u>(2) falls by 5.6% on Sep Qtr 2005</u>	
	number	% change	number	% change	number	% change
Sep Qtr 2004	117 781	-3.1	117 780	-3.1	117 780	-3.1
Dec Qtr 2004	117 068	-0.6	117 068	-0.6	117 068	-0.6
Mar Qtr 2005	120 400	2.8	120 256	2.7	121 028	3.4
Jun Qtr 2005	123 279	2.4	123 272	2.5	122 956	1.6
Sep Qtr 2005	123 257	—	123 370	0.1	119 628	-2.7

— nil or rounded to zero (including null cells)

WHAT IF...? REVISIONS TO TREND ESTIMATES *continued*

WHOLE MILK INTAKE BY FACTORIES



WHAT IF NEXT QUARTER'S

SEASONALLY ADJUSTED ESTIMATE:

	<i>Trend as published</i>		<i>(1) rises by 2.5% on Jun Qtr 2005</i>		<i>(2) falls by 2.5% on Jun Qtr 2005</i>	
	number	% change	number	% change	number	% change
Jun Qtr 2004	2 518	-0.6	2 517	-0.6	2 517	-0.6
Sep Qtr 2004	2 492	-1.0	2 493	-1.0	2 493	-1.0
Dec Qtr 2004	2 510	0.7	2 504	0.4	2 511	0.7
Mar Qtr 2005	2 565	2.2	2 567	2.5	2 564	2.1
Jun Qtr 2005	2 631	2.6	2 650	3.2	2 613	1.9

EXPLANATORY NOTES

INTRODUCTION

1 This publication contains information on livestock slaughterings, meat production, exports of live sheep and live cattle, exports of fresh, frozen and processed meat, and whole milk intake by factories, market milk sales by factories and receivals of taxable wool by wool brokers and dealers.

2 The figures shown in this publication have been revised where necessary and as a consequence may not agree with similar data shown in previous publications.

3 Where figures have been rounded, discrepancies may occur between sums of the component items and totals.

4 Unless indicated otherwise, Australian totals include data for all states and both territories.

LIVESTOCK SLAUGHTERINGS AND MEAT PRODUCTION

5 The statistics on slaughterings for red meat production are based on a monthly collection from abattoirs and other major slaughtering establishments and include estimates of animals slaughtered on farms and by country butchers and other small slaughtering establishments.

6 Red meat is shown in carcass weight and excludes offal.

7 Care should be taken when using this information as the figures only relate to slaughterings for human consumption and do not include animals condemned, slaughtered for pet food or those killed for boiling down.

8 Poultry slaughterings and meat produced statistics have been compiled from quarterly returns supplied by commercial poultry slaughtering establishments and comprise boilers, fryers and roasters. Many small producers are excluded from the collection; however, the statistics represent a high level of coverage. Tasmanian, Northern Territory and Australian Capital Territory data are excluded from the Australian total.

9 Chicken meat is shown in dressed weight of whole birds, pieces and giblets. Some slaughterings and meat production statistics for 'Ducks and Drakes' and 'Other Fowls and Turkeys' are available by contacting the ABS on Hobart (03) 6222 5974 or by writing to GPO Box 66, Hobart Tasmania 7001 (Attention: Agriculture Section).

EXPORTS OF FRESH, FROZEN AND PROCESSED MEAT

10 Table 20 shows exports of fresh, frozen and processed meat. International trade statistics are compiled by the ABS from information submitted by exporters and importers or their agents to the Australian Customs Service. Factors can be applied to beef, veal, mutton and lamb bone-out figures to derive bone-in carcass weight which, when added to bone-in figures, shows total exports in carcass weight. The factor for beef and veal is 1.5 and for mutton and lamb, 2.0. This information is sourced from Department of Agriculture, Fisheries and Forestry – Australia.

11 Beef also includes buffalo meat. Bacon and ham shown is the cured carcass weight of smoked or cooked bacon and ham. It also includes the stated net weight of packs of canned bacon and ham. Canned meat is shown as the canned weight and excludes canned bacon and ham.

LIVE SHEEP AND CATTLE EXPORTS

12 Table 21 contains statistics of the number of live sheep and cattle exported, the gross weight, gross value and unit value. The unit value is obtained by dividing the gross value by the number of animals exported. Sheep and cattle exported for breeding are excluded.

MILK

13 Tables 2, 22, 23 and 25 contain statistics collected by Dairy Australia. Whole milk intake by factories includes the whole milk equivalent of farm cream intake. Market milk sales includes white, flavoured, high and low fat milk and UHT milk. Interstate transfers of UHT milk have been included in their state of destination.

EXPLANATORY NOTES *continued*

WOOL RECEIVALS

14 The statistics in tables 2, 24 and 25 show the amount of taxable wool received by brokers and purchased by dealers from wool producers. It excludes wool received by brokers on which tax has already been paid by other dealers (private buyers) or brokers.

15 The information shown is on the basis of the state in which wool has actually been received and does not necessarily reflect the production of wool in that state.

SEASONAL ADJUSTMENT

16 Seasonal adjustment is a means of removing the estimated effects of normal seasonal variation from the series so that the effects of other influences can be more clearly recognised.

17 In the seasonal adjustment of the livestock estimates, account has been taken of both normal seasonal factors and 'trading day' effects, where significant, (arising from the varying length of each quarter and the varying numbers of Sundays, Mondays, Tuesdays etc. in the quarter). Adjustments are also made for the effects of change in the date of Easter holidays, again, where significant. Seasonal adjustment does not remove from the series the effect of irregular influences (e.g. abnormal weather, industrial disputes).

18 The state component series have been seasonally adjusted independently. Therefore, the adjusted components may not add to the Australian group totals.

19 In this publication the seasonally adjusted estimates are produced by the concurrent seasonal adjustment method which takes account of the latest available original estimates. This method improves the estimation of seasonal factors and therefore, the seasonally adjusted and trend estimates for the current and previous quarters. As a result of this improvement, revisions to the seasonally adjusted and trend estimates will be observed for recent periods. In most instances the only noticeable revisions will be to the previous quarter and the same quarter one year ago. A more detailed review is conducted annually prior to the September quarter release, using data up to and including the June quarter. The concurrent seasonal adjustment methodology replaces the forward factor methodology used previously.

TREND ESTIMATES

20 A trend estimate is obtained by reducing the irregular component from the seasonally adjusted series. In this publication trend estimates are generally derived by applying a 7-term Henderson moving average to the seasonally adjusted series. The 7-term Henderson, (like all Henderson averages) is symmetric, but as the end of a time series is approached, asymmetric forms of the average are applied. Unlike the weights of the standard 7-term Henderson moving average, the weights employed here have been tailored to suit the particular characteristics of individual series. While the asymmetric weights enable the trend to be calculated for recent quarters, it does result in revisions to the estimates for the most recent three quarters as additional observations become available. Revisions of trend estimates will also occur with revisions to the original data and re-estimation of seasonal factors.

21 Sensitivity analysis indicates the potential magnitude and direction of revisions created to the last three estimates. It aims to show how a specified movement in the seasonally adjusted data in the next period will affect the trend path of the time series. By showing how sensitive the trend estimates are to the addition of new data, the analysis provides information which can be used in the assessment of the trend's stability.

22 For further information, see *Information Paper: A Guide to Interpreting Time Series – Monitoring 'Trends', an Overview* (cat. no. 1348.0) or contact the Assistant Director, Time Series Analysis on Canberra (02) 6252 6345.

EXPLANATORY NOTES *continued*

RELATED PUBLICATIONS

23 Current publications and other products released by the ABS are listed in the *Catalogue of Publications and Products* (cat. no. 1101.0). The Catalogue is available from any ABS office or the ABS web site <<http://www.abs.gov.au>>. The ABS also issues a daily Release Advice on the web site which details products to be released in the week ahead.

GENERAL ACKNOWLEDGMENT

24 ABS publications draw extensively on information provided freely by individuals, businesses, governments and other organisations. Their continued cooperation is very much appreciated. Without it, the wide range of statistics published by the ABS would not be available. Information received by the ABS is treated in strict confidence as required by the *Census and Statistics Act 1905*.

FOR MORE INFORMATION . . .

- INTERNET* **www.abs.gov.au** the ABS web site is the best place to start for access to summary data from our latest publications, information about the ABS, advice about upcoming releases, our catalogue, and Australia Now—a statistical profile.
- LIBRARY* A range of ABS publications is available from public and tertiary libraries Australia-wide. Contact your nearest library to determine whether it has the ABS statistics you require, or visit our web site for a list of libraries.
- CPI INFOLINE* For current and historical Consumer Price Index data, call 1902 981 074 (call cost 77c per minute).
- DIAL-A-STATISTIC* This service now provides only current Consumer Price Index statistics call 1900 986 400 (call cost 77c per minute).

INFORMATION SERVICE

Data already published that can be provided within five minutes will be free of charge. Our information consultants can also help you to access the full range of ABS information—ABS user pays services can be tailored to your needs, time frame and budget. Publications may be purchased. Specialists are on hand to help you with analytical or methodological advice.

- PHONE* 1300 135 070
- EMAIL* client.services@abs.gov.au
- FAX* 1300 135 211
- POST* Client Services, ABS, GPO Box 796, Sydney NSW 2001

FREE ACCESS TO PUBLICATIONS

All ABS publications can be downloaded free of charge from the ABS web site.

- WEB ADDRESS* www.abs.gov.au



2721500009055

ISSN 0728 4047

RRP \$24.00